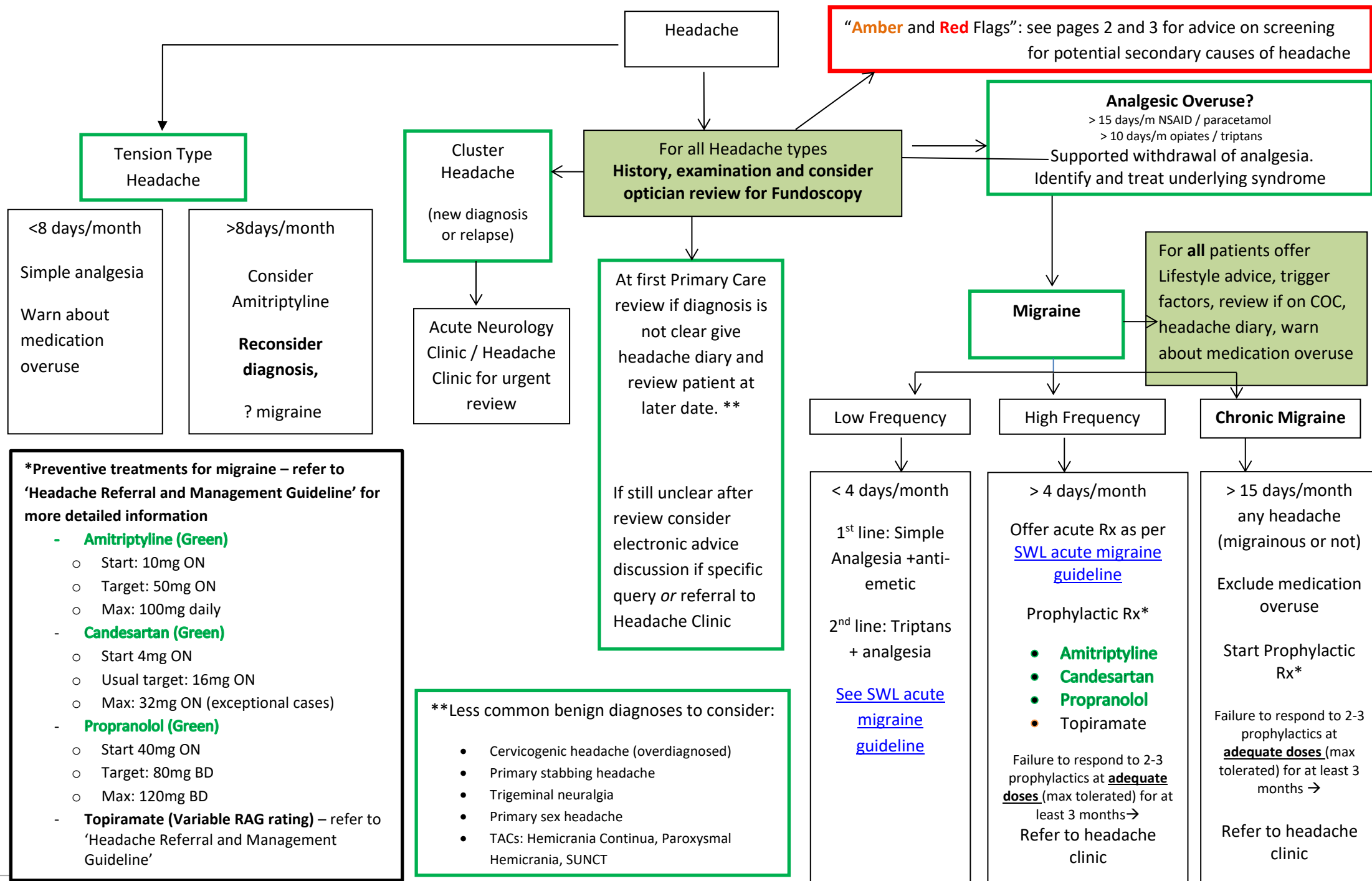


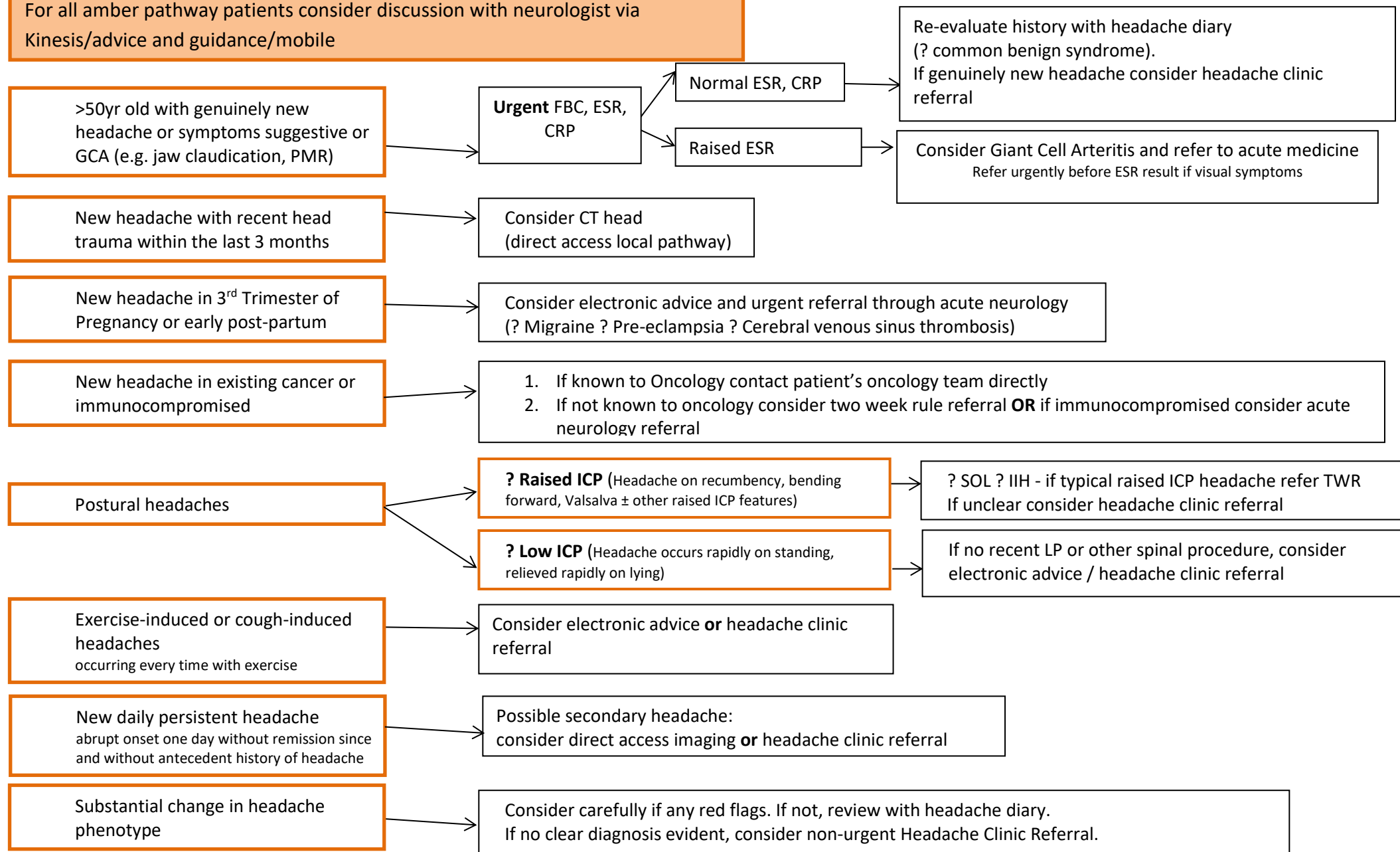
South West London Primary Care Adult Headache Referral and Management Guidance



South West London Primary Care Adult Headache Referral and Management Guidance

HEADACHE AMBER FLAGS – pause and consider secondary causes.

For all amber pathway patients consider discussion with neurologist via Kinesis/advice and guidance/mobile

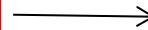


South West London Primary Care Adult Headache Referral and Management Guidance

HEADACHE RED FLAGS - URGENT

New Headache AND

- Subacute Progressive Focal Neurology
- Seizures
- Personality or Cognitive change not suggestive of Dementia, with no Psychiatric history, *and* confirmed by witness



Two Week Rule Referral

If high level of concern discuss with acute neurology service

Thunderclap Headaches (<5 minutes to maximum severity)

Acute headache with loss or alteration of consciousness

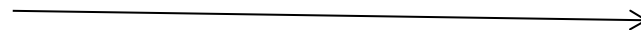
Headache with raised ICP features + vomiting, drowsiness ± swollen optic discs or visual loss

Headache with Systemic symptoms, e.g.

- Malignant hypertension
- Meningism

? Giant Cell Arteritis + visual symptoms (+/- ↑ ESR)

Red Eye + Headache (especially elderly)*



Emergency referral

Emergency Eye Clinic referral

*Consider **Angle Closure Glaucoma** (ΔΔ Cluster Headache or related disorder)

South West London Primary Care Adult Headache Referral and Management Guidance

Document History

Version: V 6.2

Author: SWL Neurology Network

Approved by: Integrated medicines optimisation committee (IMOC)

Approval date: 29/01/2025

Review Date: January 2027 or sooner where appropriate.